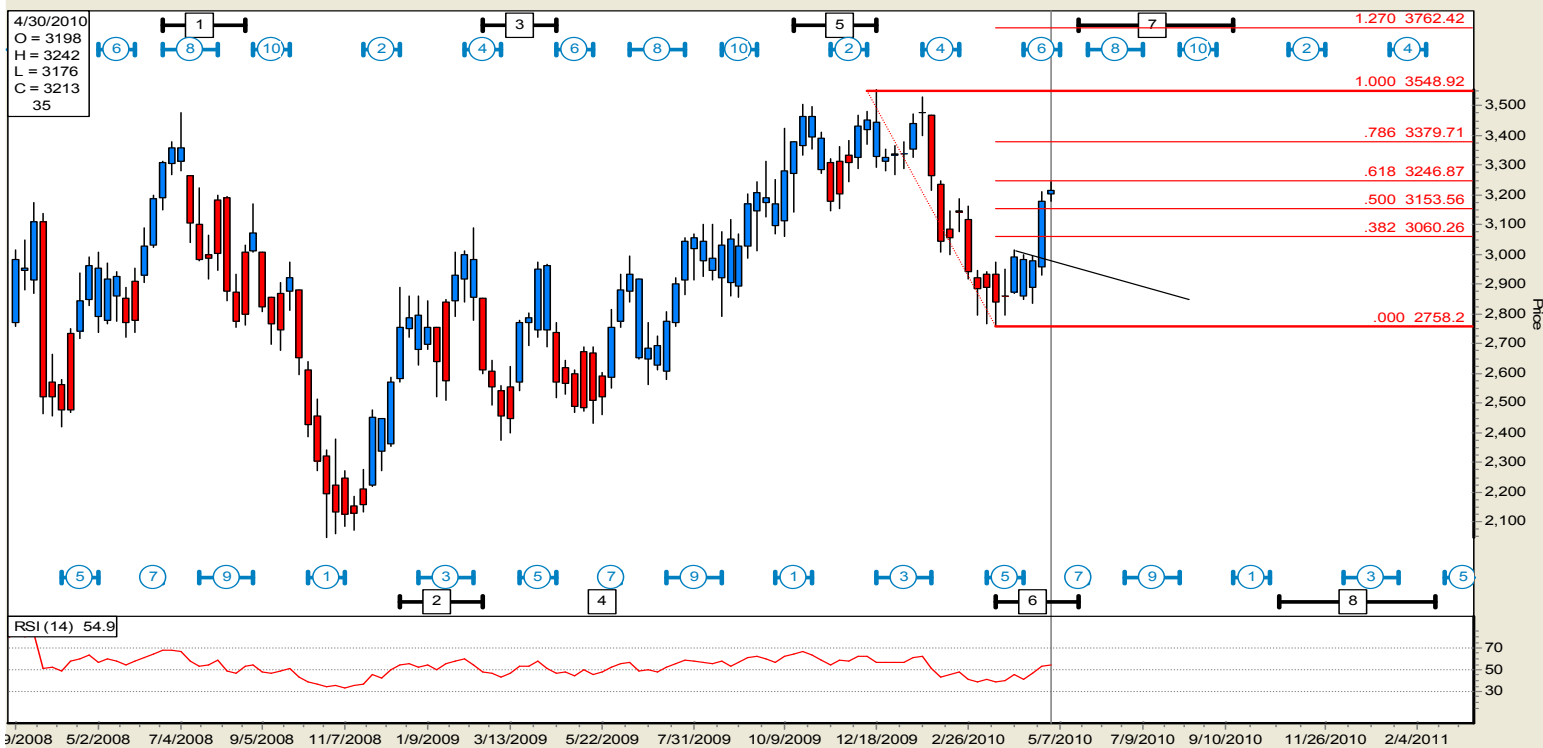


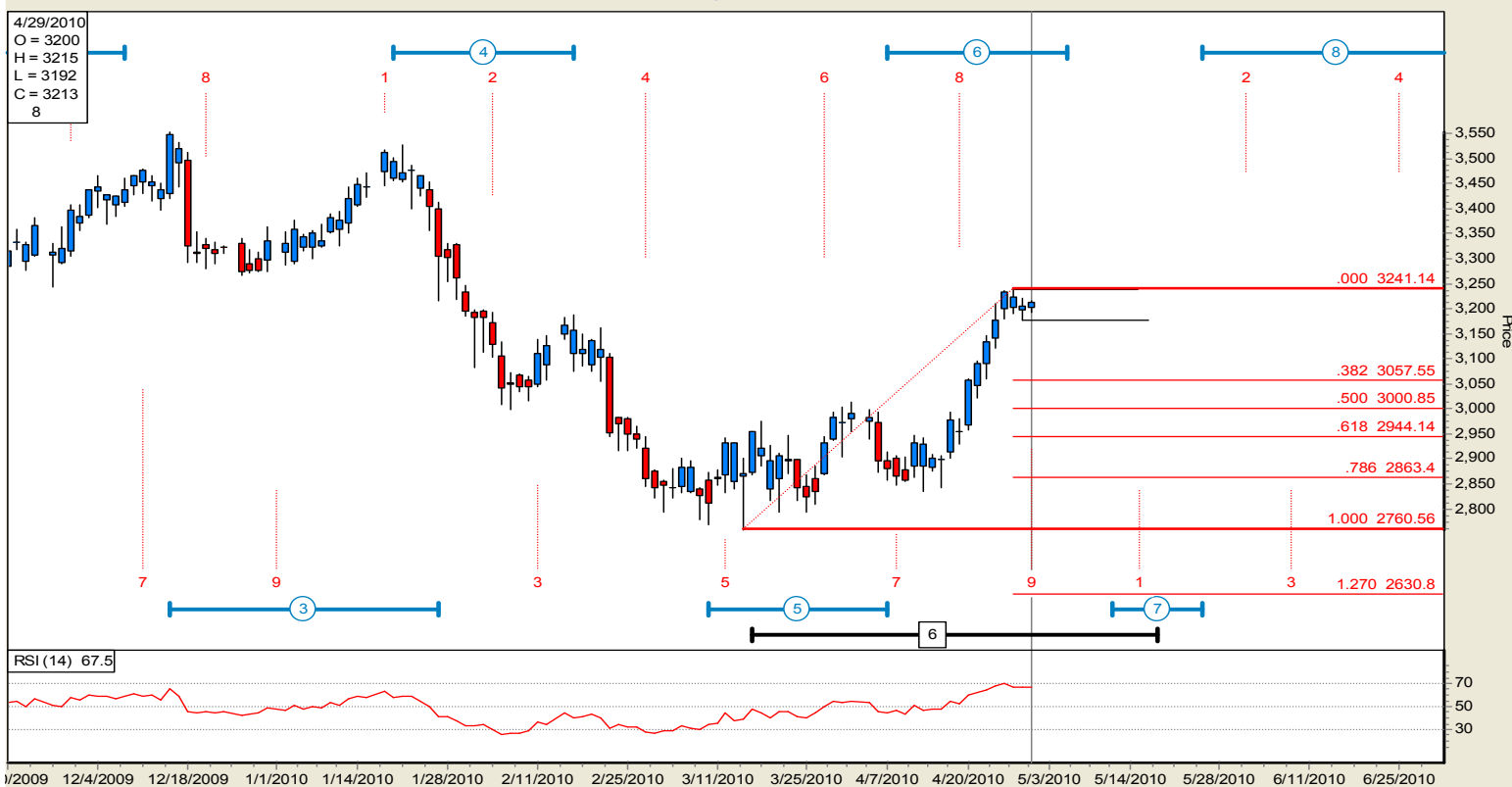
10-04-29 Delta Timing Soft Report Cocoa Weekly

Cocoa NYBT (Comb) CA - D67/00 - WEEKLY Bars 4/29/2010 Close = 3213.000 (8.000) Using '11(11)COCOA' Delta TPs File: C:\Gd\Delta\F016.DTA (0)



Cocoa has moved up to the medium 6 high against the Fib 618 resistance. A move above RSI 50 is supportive to higher prices with follow through. To stay long a stop below RSI 50 should be in place. Delta is timing a move down to medium 7 starting the inversion time window on the intermediate term.

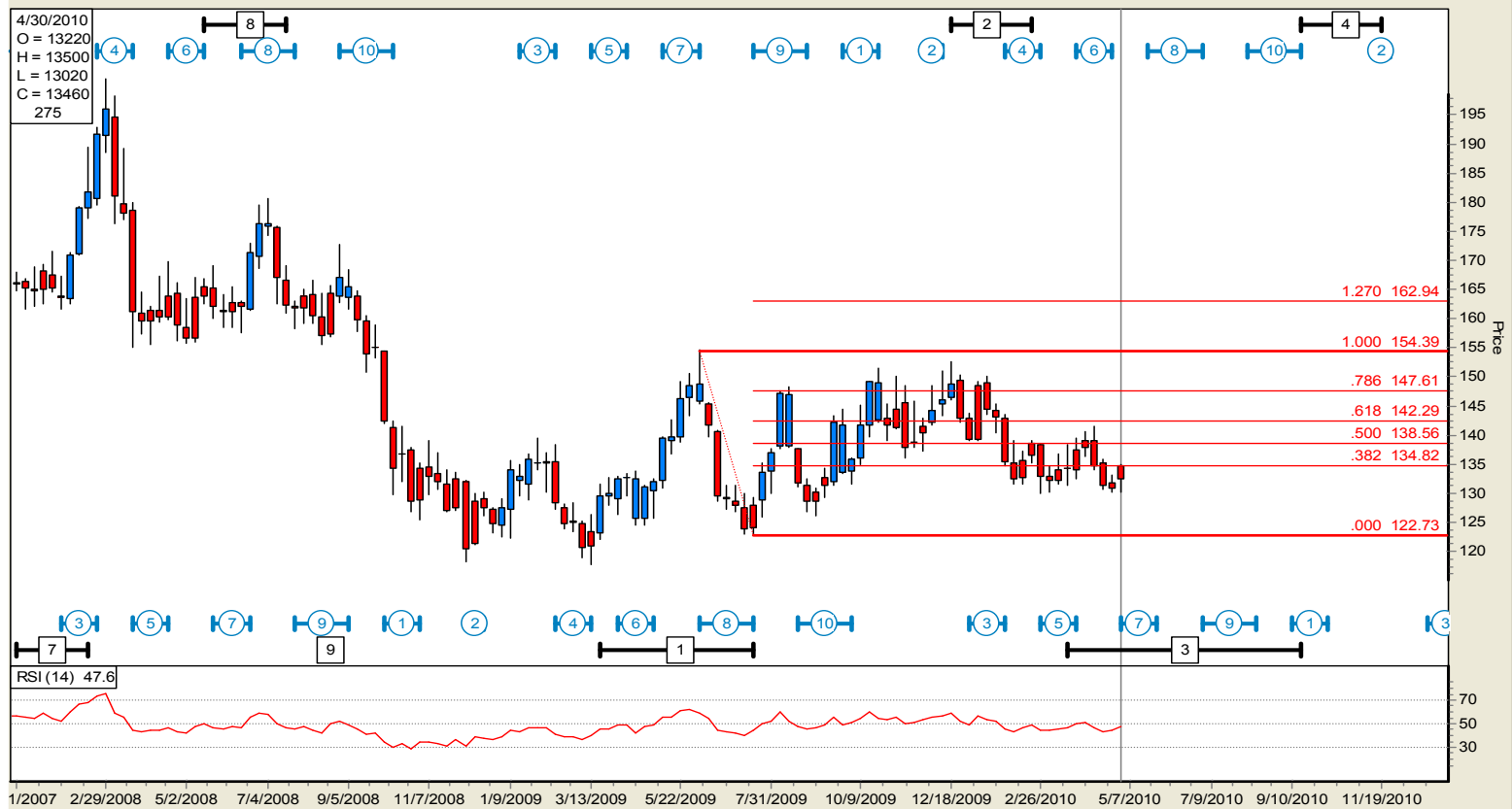
Cocoa NYBT (Comb) CA - D67/00 - DAILY Bars 4/29/2010 Close = 3213.000 (8.000) Using '11(11)COCOA' Delta TPs File: C:\Gd\Delta\F016.DTA (0)



Cocoa moved sideways to the intermediate 9 on a strong move up to intermediate 8 high. The inversion time window has started where a new high will become an In Between Point starting the move down to medium 7 low. Sell a break of the trend line for a move down to support. RSI 70 has started profit taking on cocoa for short term traders that were long.

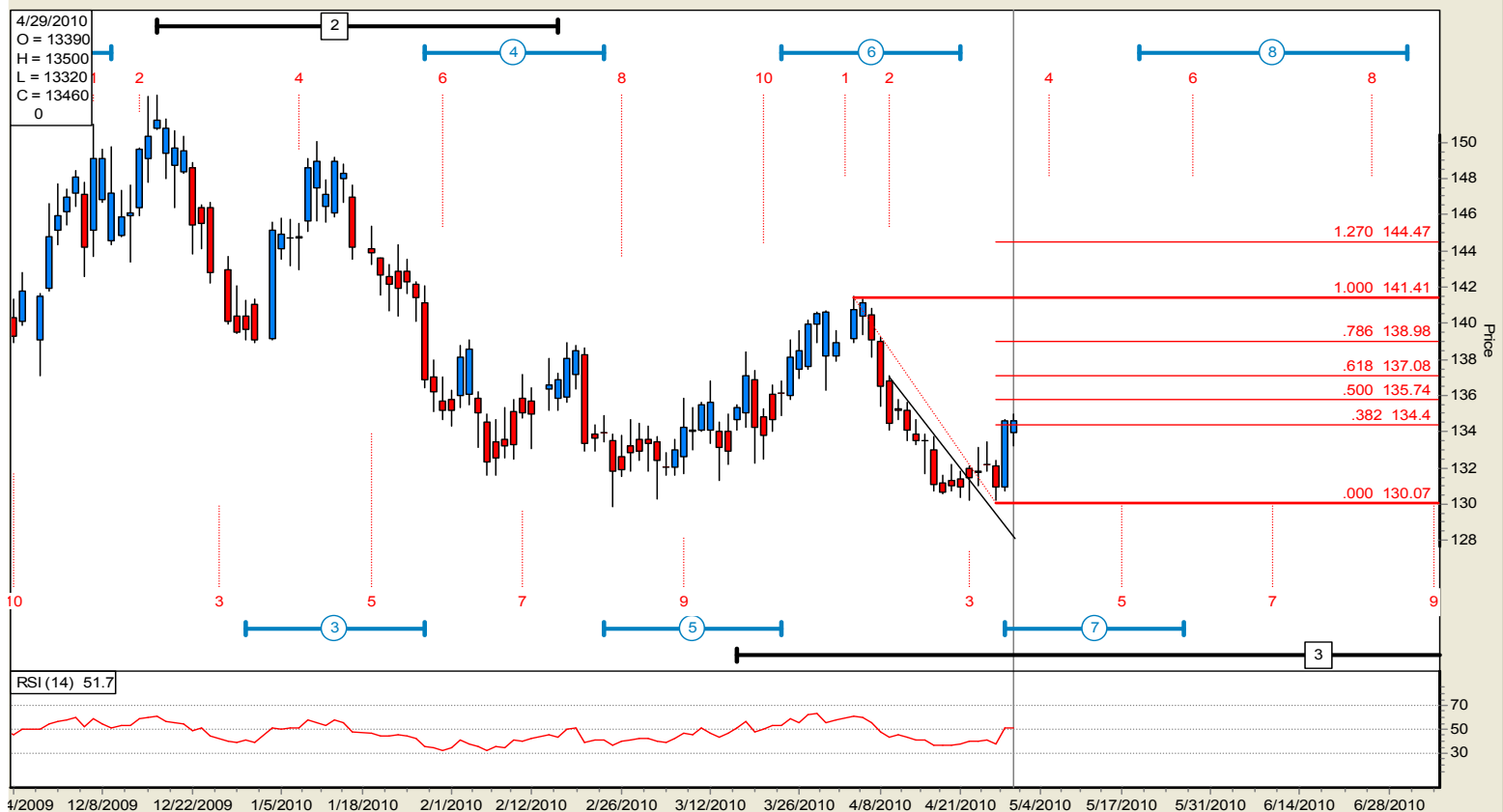
Coffee Weekly

Coffee (Comb) CAJ L - D67/00 - WEEKLY Bars 4/29/2010 Close = 134.600 (0.000) Using '12(12)COFFEE' Delta TPs File: C:\Gd\Delta\F030.DTA (2)



Coffee has remained range bound for the past 4 months between support at 120 and resistance 140. If RSI 50 is broken then the move up to medium 8 should push price up to overhead resistance near the Fib 618.

Coffee (Comb) CAJ L - D67/00 - DAILY Bars 4/29/2010 Close = 134.600 (0.000) Using '12(12)COFFEE' Delta TPs File: C:\Gd\Delta\F030.DTA (2)

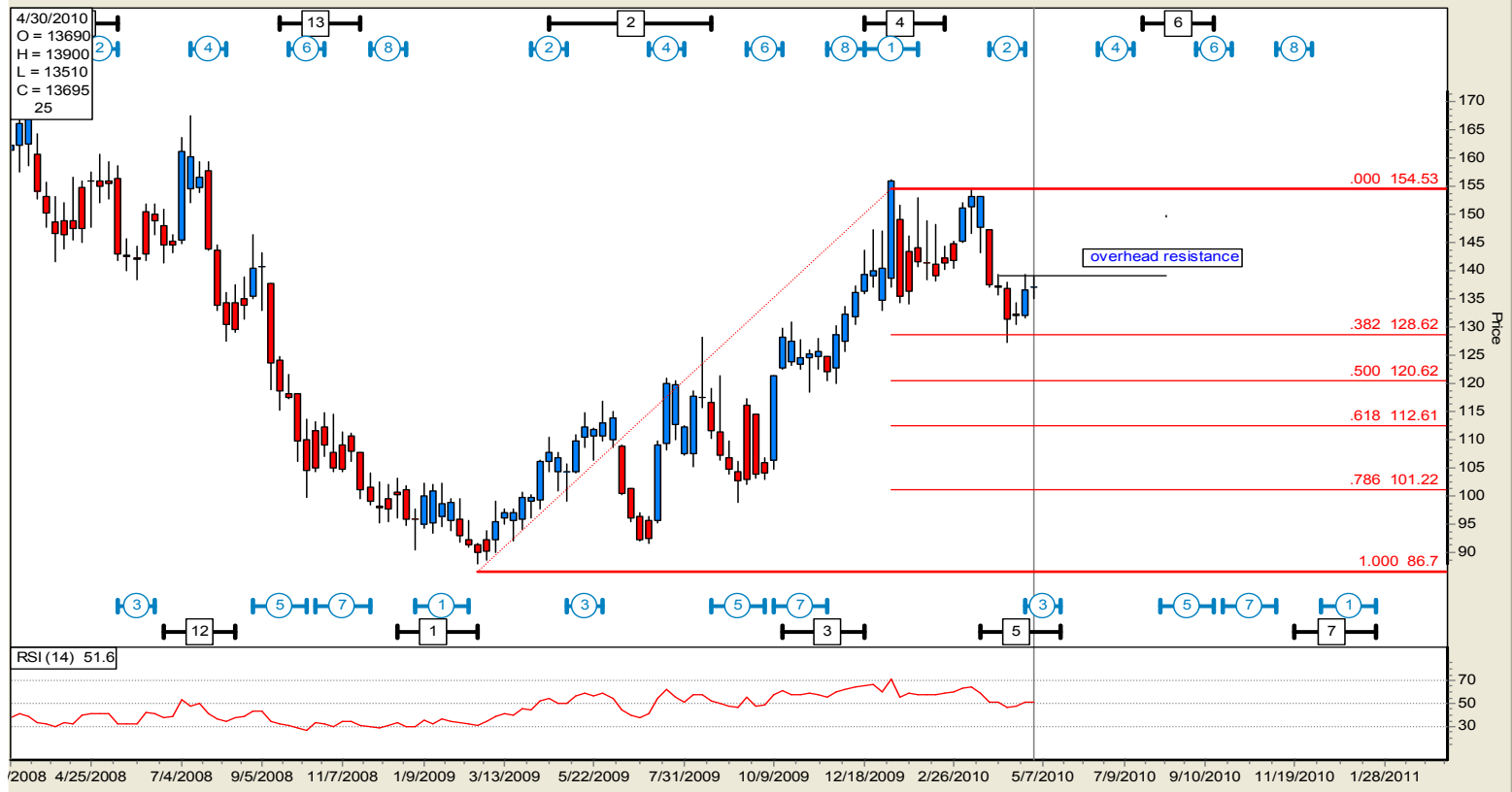


Delta is timing an intermediate 3 low for coffee where a trend line trigger started a long trade. A break even stop is in order to stay long as coffee finds resistance against RSI 50 and the Fib 382. A break of today's highs will define a continuation move up to overhead resistance.

Orange Juice Weekly

Orange Juice (Comb) - D67/00 - WEEKLY Bars 4/29/2010 Close = 136.950 (0.200)

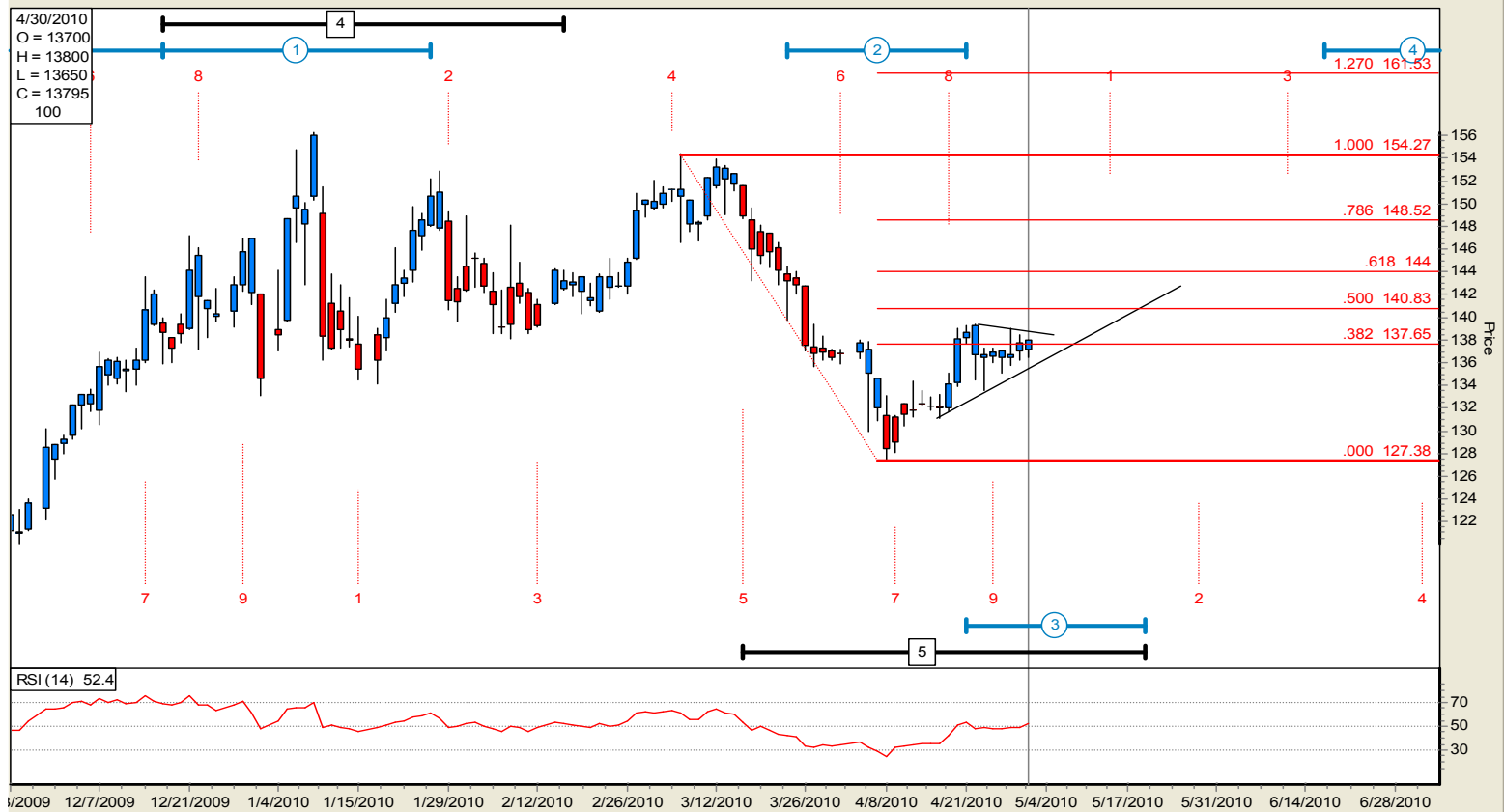
Using '22(22)ORANGE JUICE' Delta TPs File: C:\Gd\Delta\F029.DTA (2)



If overhead resistance is broken then medium 3 will time as a low starting the move up to long term 6. The support holding above the Fib 382 is also a sign of higher prices timed by the long term 5 low.

Orange Juice (Comb) - D67/00 - DAILY Bars 4/30/2010 Close = 137.950 (1.000)

Using '22(22)ORANGE JUICE' Delta TPs File: C:\Gd\Delta\F029.DTA (2)

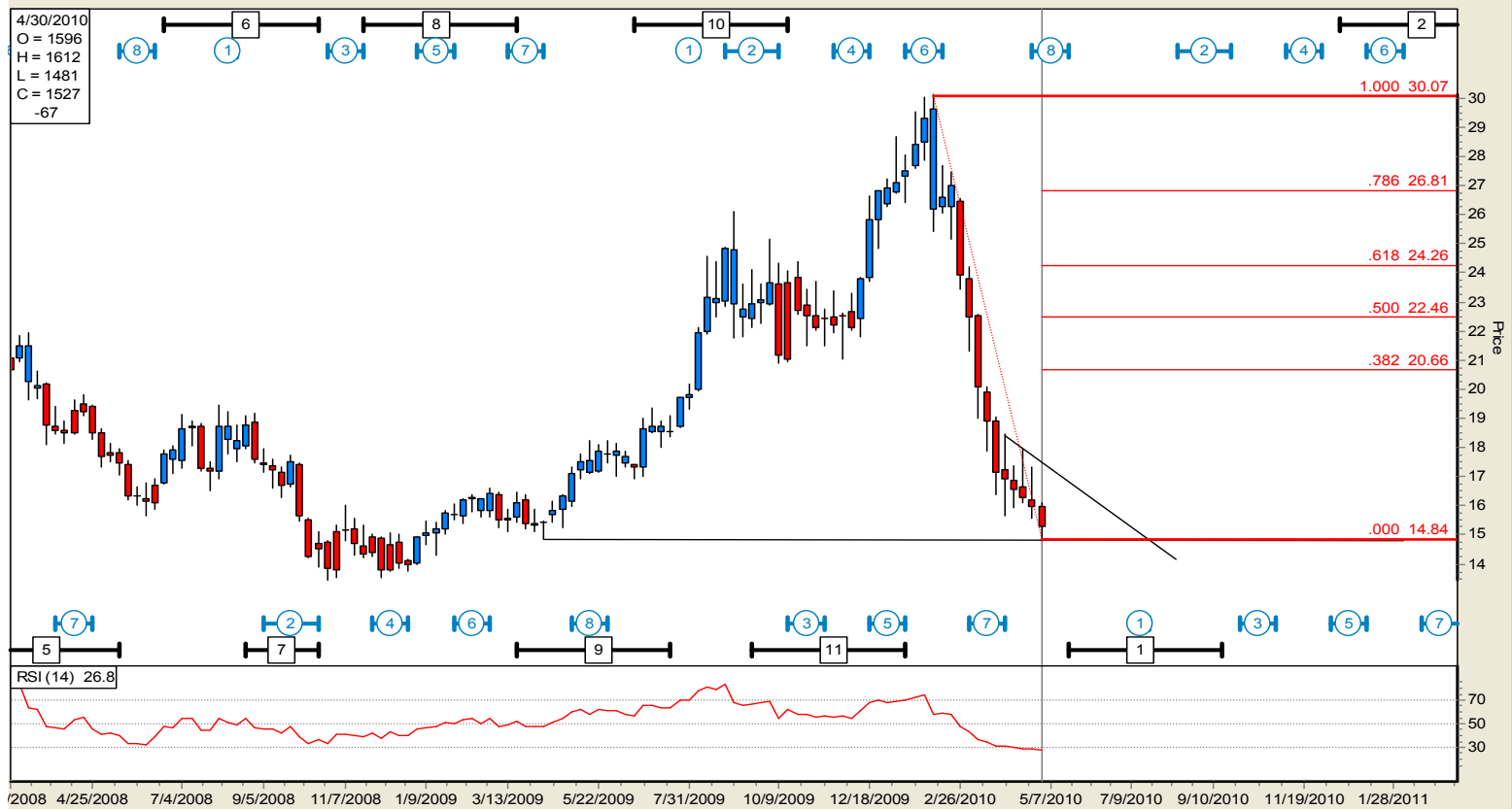


Delta timed an intermediate 9 low at trend line support defining a move higher. Technical buy orders are above the top trend line for **break out** system traders. The inversion time window has started for the intermediate term time frame making timing difficult.

Sugar Weekly

Sugar #11 (Comb) CA d - D67/00 - WEEKLY Bars 4/30/2010 Close = 15.270 (-0.050)

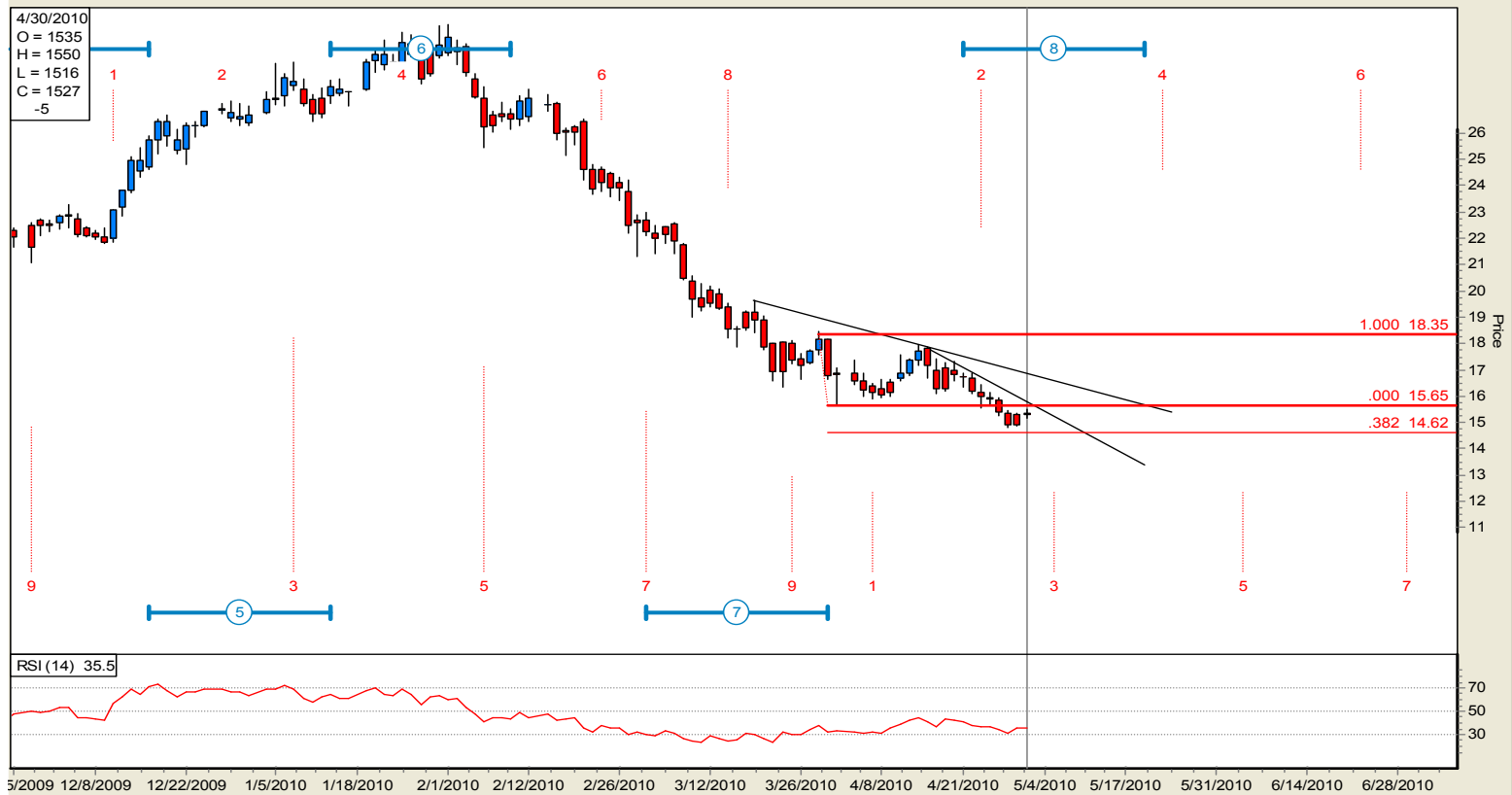
Using '13(13)SUGAR' Delta TP's File: C:\Gd\Delta\F045.DTA (2)



Sugar is moving down to the medium 7 low now testing strong support near the round number of 15. The buy signal will come after medium 8 produces a short covering rally then a move down to test long term support near the medium 1 low.

Sugar #11 (Comb) CA d - D67/00 - DAILY Bars 4/30/2010 Close = 15.270 (-0.050)

Using '13(13)SUGAR' Delta TP's File: C:\Gd\Delta\F045.DTA (2)



The RSI 30 produced profit taking and bottom picking near the Fib Ext 382 on the move down to intermediate 3 low. Intermediate 3 will produce short covering. The intermediate 5 will time the next buy signal which could be the long term 1 low.

Cotton Weekly

Cotton #2 (Comb) CA d - D67/00 - WEEKLY Bars 4/30/2010 Close = 83.850 (0.570)

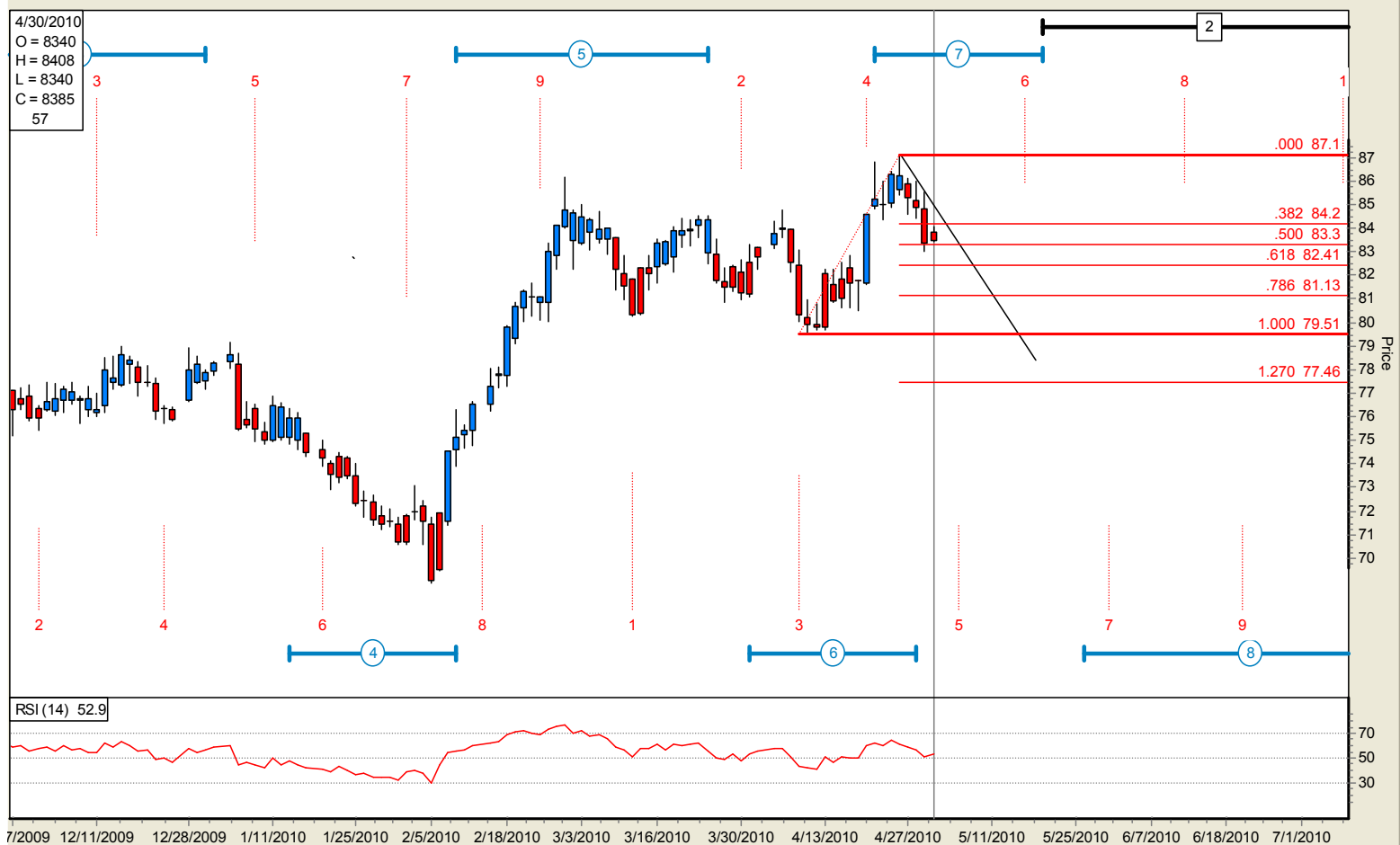
Using '10(10)COTTON' Delta TP's File: C:\Gd\Delta\F018.DTA (2)



Setting the proper Fibonacci study is important when defining the price that will go with Delta timing. Cotton moved up to the Fib 787 to the tick timed by the medium 7 high.

Cotton #2 (Comb) CA d - D67/00 - DAILY Bars 4/30/2010 Close = 83.850 (0.570)

Using '10(10)COTTON' Delta TP's File: C:\Gd\Delta\F018.DTA (2)



Delta is timing well on the intermediate term for cotton. Price has moved down to the RSI 50 and Fib 500 support timing an intermediate 5 low. A trend line break will start the move up to retest medium 7 at intermediate 6. This will produce new highs or a topping pattern.

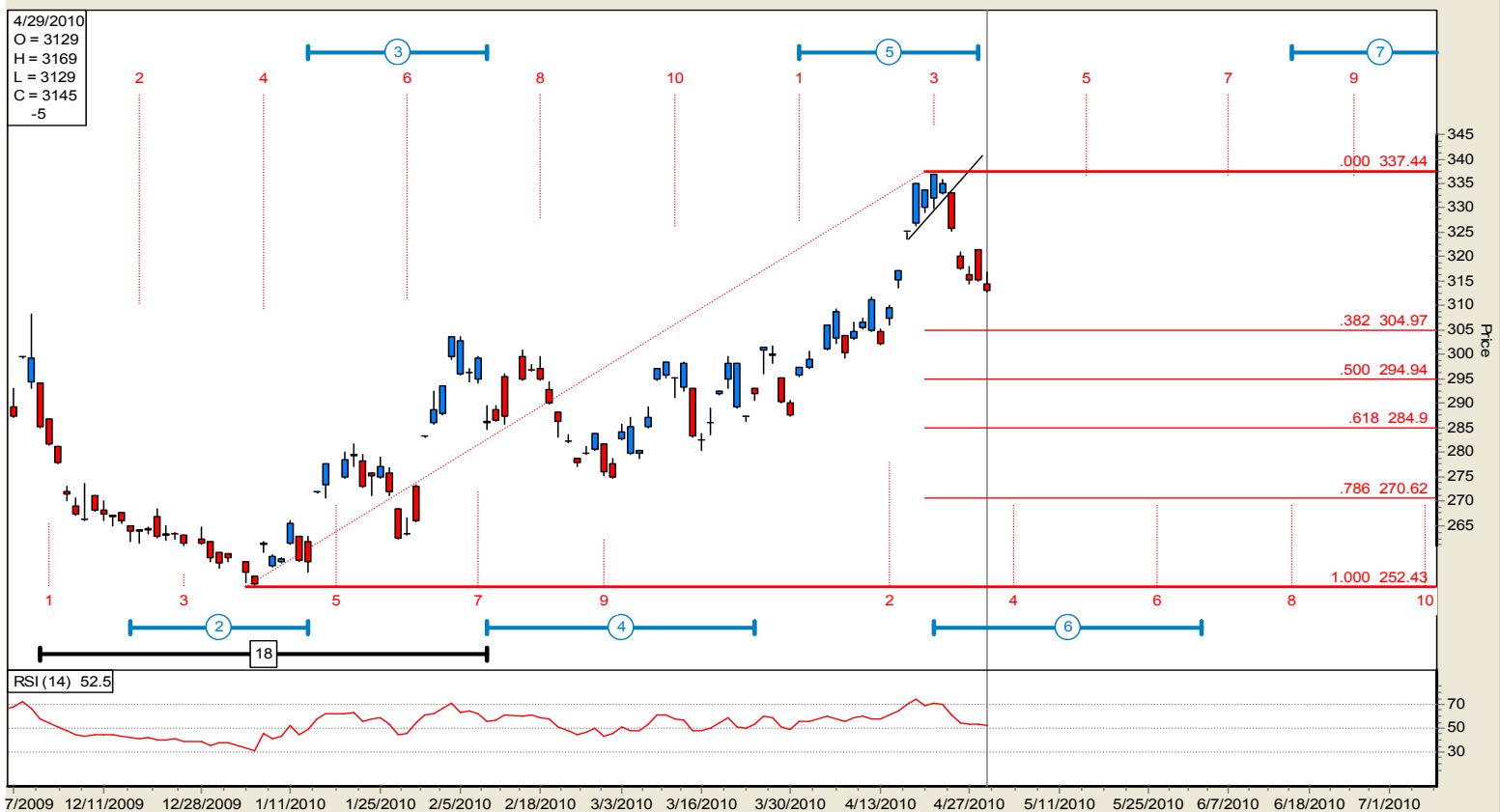
Lumber Weekly

Lumber Cadj Liq - D67/00 - WEEKLY Bars 4/29/2010 Close = 314.500 (-0.500) Using '14(14)LUMBER' Delta TP's File: C:\Gd\Delta\F031.DTA (1)



Technical traders took profit on lumber at the approach of the Fib 618 and the RSI 70 timed by the medium 5 high. The Fib 382, the weekly trend line and the old highs, looking left, are defining strong support on the move down to medium 6 low.

Lumber Cadj Liq - D67/00 - DAILY Bars 4/29/2010 Close = 314.500 (-0.500) Using '14(14)LUMBER' Delta TP's File: C:\Gd\Delta\F031.DTA (1)



Strong bears will try to hold their short position down to the Fib 382 at the round number of 300 timed by the medium 6 low. The Delta rule many trends end at point 3 proved correct on the long trade. Setting a trend line below support would have been a great short trigger.

These reports try to put together time and price. Sometimes they are spot on and other times, well, they are not. That is the nature of trading. A director using this service said it helped him retire. I asked, "What is your secret?" His reply, "patience for strong trade set ups, then staying with the trend."

Trade well,

Kirby Cooper

www.kirbycooper.com

U.S. Government Required Disclaimer - Commodity Futures Trading Commission Futures and Options trading has large potential rewards, but also large potential risk. You must be aware of the risks and be willing to accept them in order to invest in the futures and options markets. Don't trade with money you can't afford to lose. This is neither a solicitation nor an offer to Buy/Sell futures or options. No representation is being made that any account will or is likely to achieve profits or losses similar to those discussed on this web site. The past performance of any trading system or methodology is not necessarily indicative of future results.

CFTC RULE 4.41 - HYPOTHETICAL OR SIMULATED PERFORMANCE RESULTS HAVE CERTAIN LIMITATIONS. UNLIKE AN ACTUAL PERFORMANCE RECORD, SIMULATED RESULTS DO NOT REPRESENT ACTUAL TRADING. ALSO, SINCE THE TRADES HAVE NOT BEEN EXECUTED, THE RESULTS MAY HAVE UNDER-OVER COMPENSATED FOR THE IMPACT, IF ANY, OF CERTAIN MARKET FACTORS, SUCH AS LACK OF LIQUIDITY. SIMULATED TRADING PROGRAMS IN GENERAL ARE ALSO SUBJECT TO THE FACT THAT THEY ARE DESIGNED WITH THE BENEFIT OF HINDSIGHT. NO REPRESENTATION IS BEING MADE THAT ANY ACCOUNT WILL OR IS LIKELY TO ACHIEVE PROFIT OR LOSSES SIMILAR TO THOSE SHOWN.